

How to update GSD file for STEP 7 ?

Step 1: Download the newest GSD file.

GW-7552(ipds0b87.GSD) at

ftp://ftp.icpdas.com/pub/cd/fieldbus_cd/profibus/gateway/gw-7552/gsd/

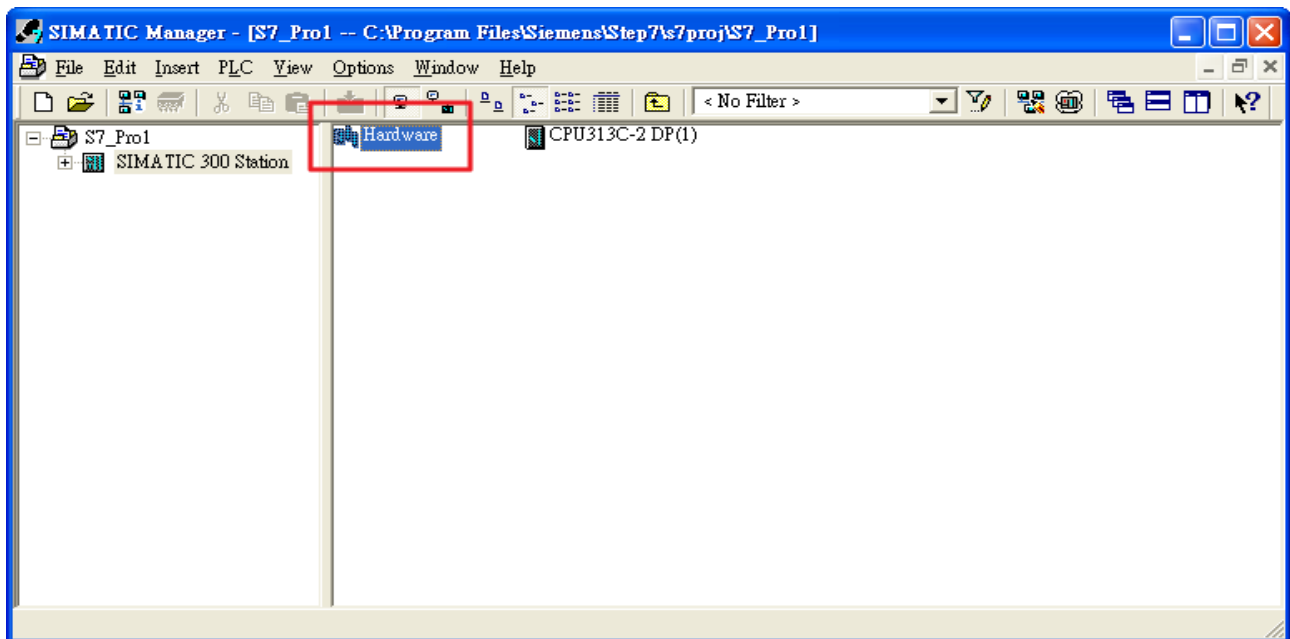
GW-7553(IPDS0C0D.GSD) at

ftp://ftp.icpdas.com/pub/cd/fieldbus_cd/profibus/gateway/gw-7553/gsd/

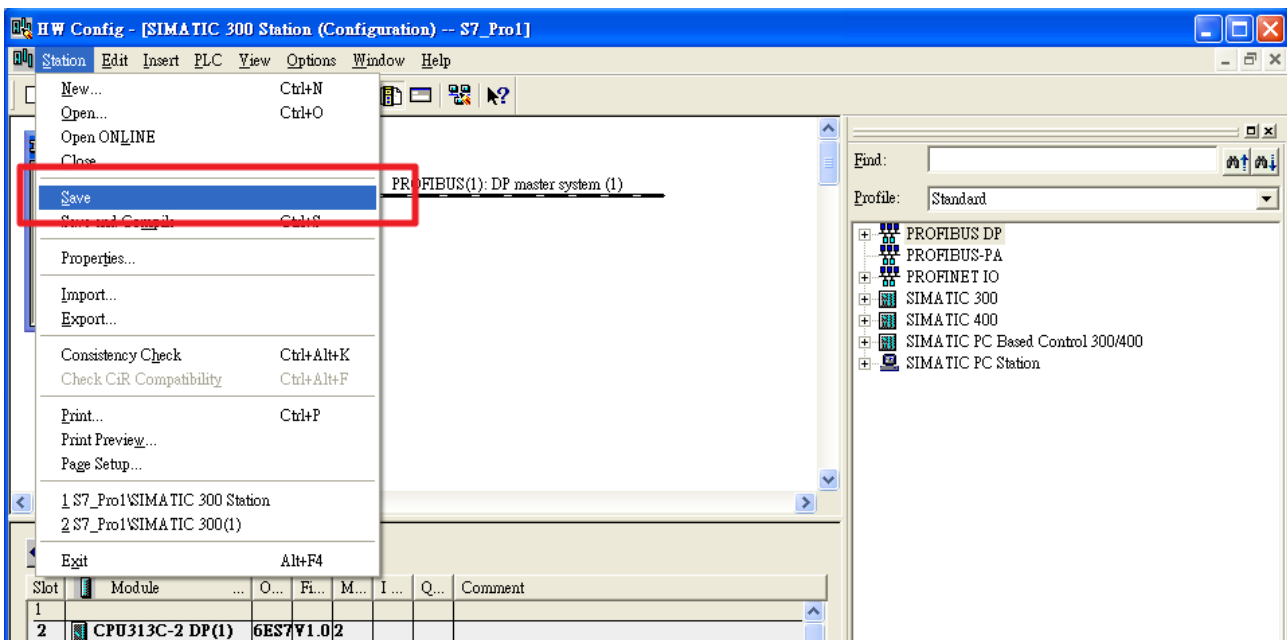
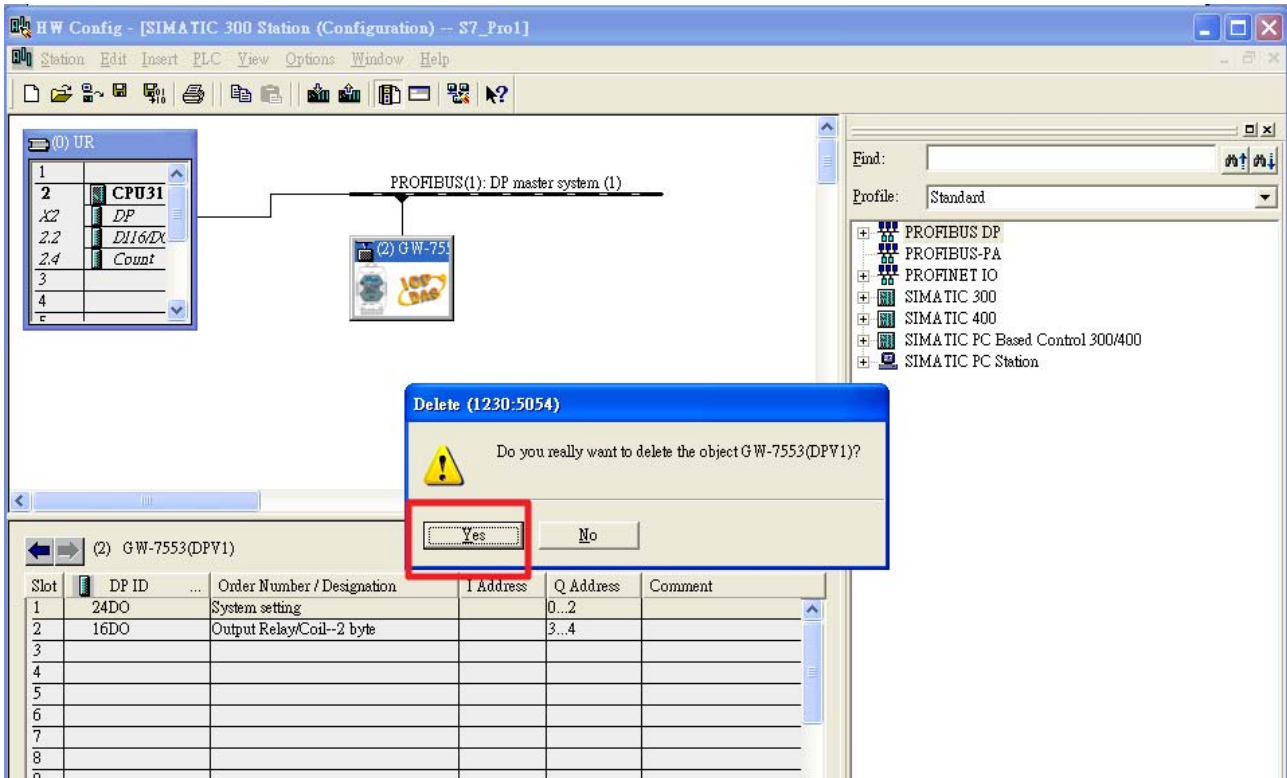
i-7550(ipds0b0d.GSD) at

ftp://ftp.icpdas.com/pub/cd/fieldbus_cd/profibus/converter/i-7550/gsd/

Step 2: Double click "Hardware"



Step 3: Delete PROFIBUS slave and then click “station => Save”



Step 4: Close “Hardware”

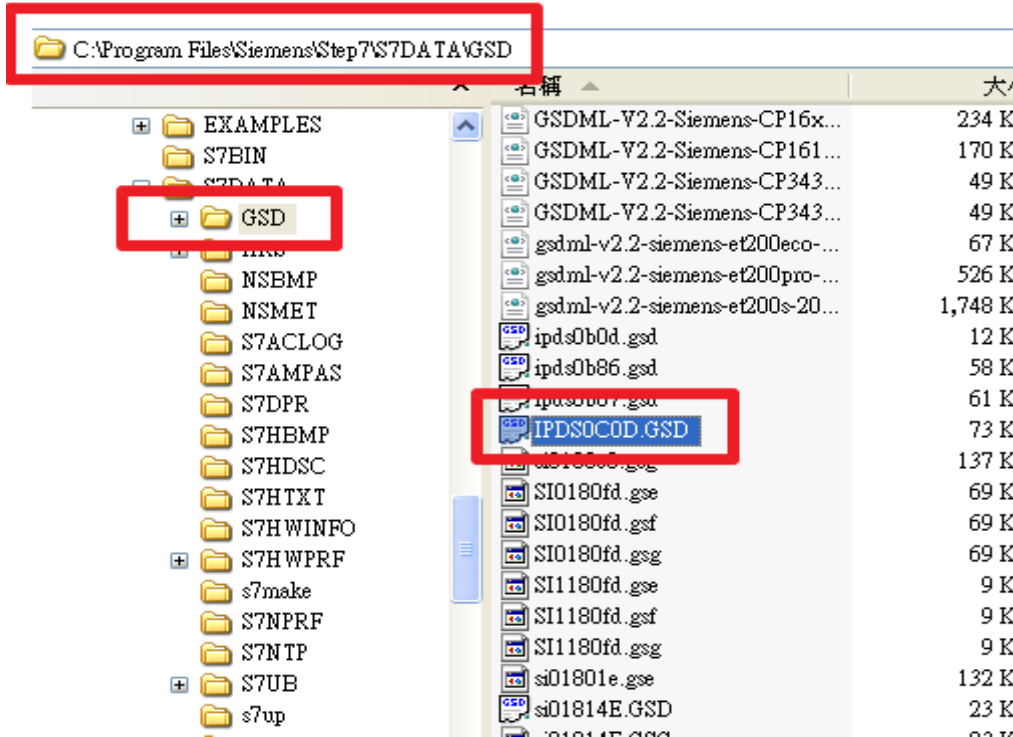
Step 5: Open “<Drive>:\Program Files\Siemens\Step7\S7DATA\GSD” , find “IPDS0C0D.GSD” and delete it.

Note:

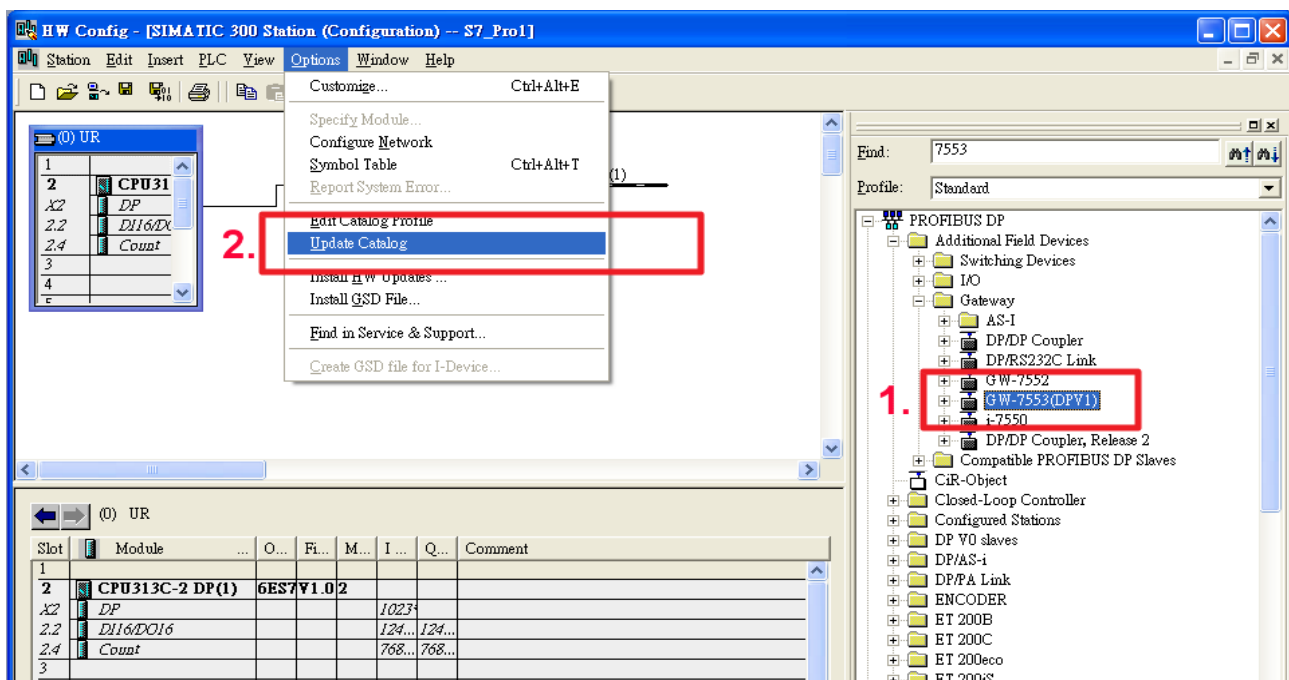
GW-7552: ipda0b87.gsd

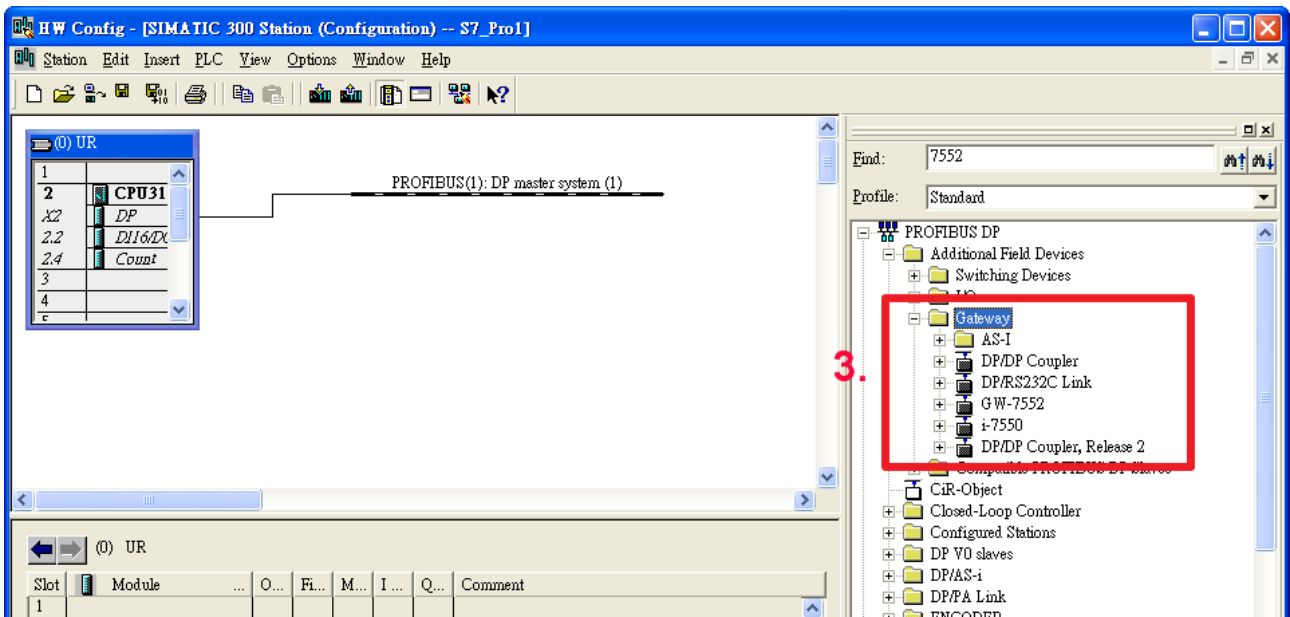
GW-7553: IPDS0C0D.GSD

i-7550: ipds0b0d.gsd

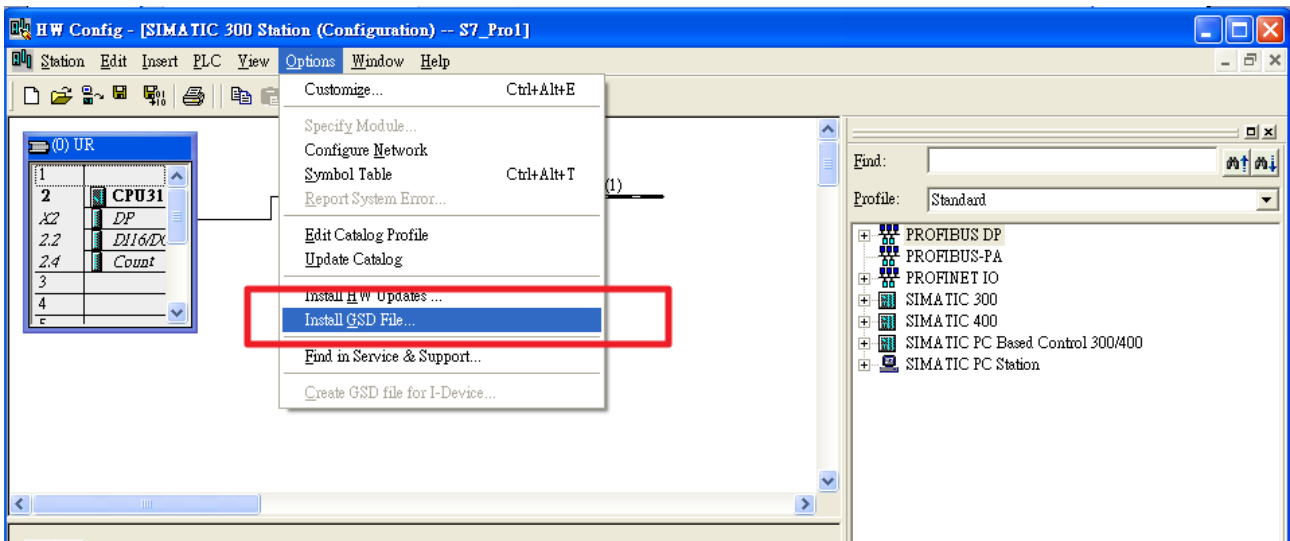


Step 6: Open “Hardware” and check if GW-7553(DPV1) is disappear

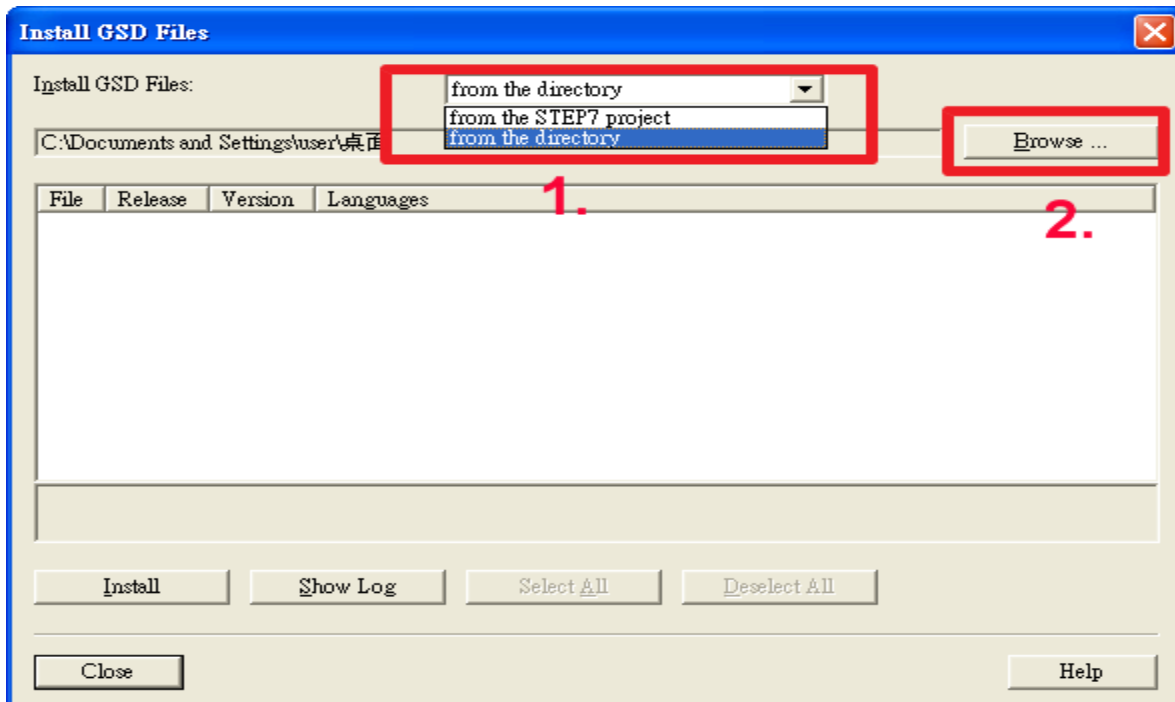




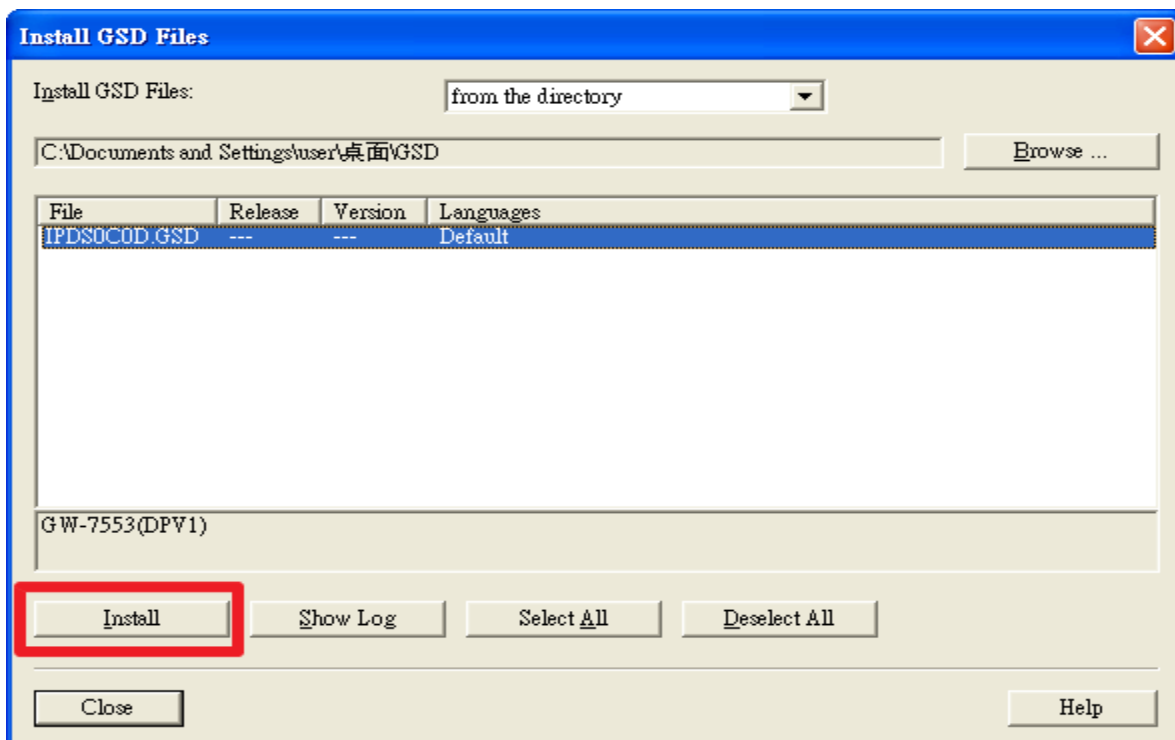
Step 7: Click option => "Install GSD File"



Step 8: Select “from the directory” and click “Browse”.



Step 9: Click “Install”



Step 10: Click "Yes" and then install OK.

